

DATE	REV.	DESCRIPTION	DRN	APPD
12-AUG-10	01	INITIAL RELEASE	RJA	

MATERIAL SPECIFICATIONS

- M1. MATERIAL IS TO BE STANDARD LAMINATE, SMOKEY WHITE, WITH BLACK T-MOLD EDGING, BONDED TO 1/8 INCH THICK SHEET OF HIGH DENSITY POLYETHYLENE (HDPE).
- M2. HDPE SHEET IS TO BE BONDED TO STANDARD LAMINATE WITH 3M #4952 DOUBLE-SIDED VHB ADHESIVE TAPE (MCMASTER-CARR P/N: 76675A21) PRIOR TO MACHINING HOLE PATTERN.
- M3. BREAK CORNERS OF HDPE SHEET TO MATCH EDGING.
- M4. HOLE PATTERN IS STAGGERED, HOLES ARE 3/16 INCH IN DIAMETER, THRU ALL, QTY. 372.
- M5. DEBURR AND BREAK SHARP EDGES -0.4MM UNLESS OTHERWISE SPECIFIED.
- M6. NO CHANGES SHALL BE MADE TO RAW MATERIALS OR ASSOCIATED PROCESSING MATERIALS WITHOUT THE PRIOR WRITTEN CONSENT OF TESLA MOTORS.

DIMENSIONAL NOTES

- D1. THE MASTER SOURCE OF INFORMATION FOR THIS DRAWING IS A COMPUTER DATABASE.
- D2. DO NOT SCALE PRINT.

REGULATORY CHARACTERISTICS

GENERAL NOTES

NAME	DATE	INTERPRET DIMENSIONS AND TOLERANCES PER ISO 1101, 128, 129
DRAWN BY: R.ANDRADE	12-AUG-10	



TESLA MOTORS, Inc.

THE INFORMATION CONTAINED HEREIN IS DEEMED TO BE CONFIDENTIAL, PROPRIETARY, AND A TRADE SECRET OF TESLA MOTORS. THIS INFORMATION MAY NOT BE USED, REPRODUCED, OR DISCLOSED AS THE DIRECT OR INDIRECT BASIS FOR THE DEVELOPMENT, MANUFACTURE, OR SALE OF PROCESSES OR PRODUCTS WITHOUT THE EXPRESSED WRITTEN CONSENT OF TESLA MOTORS.

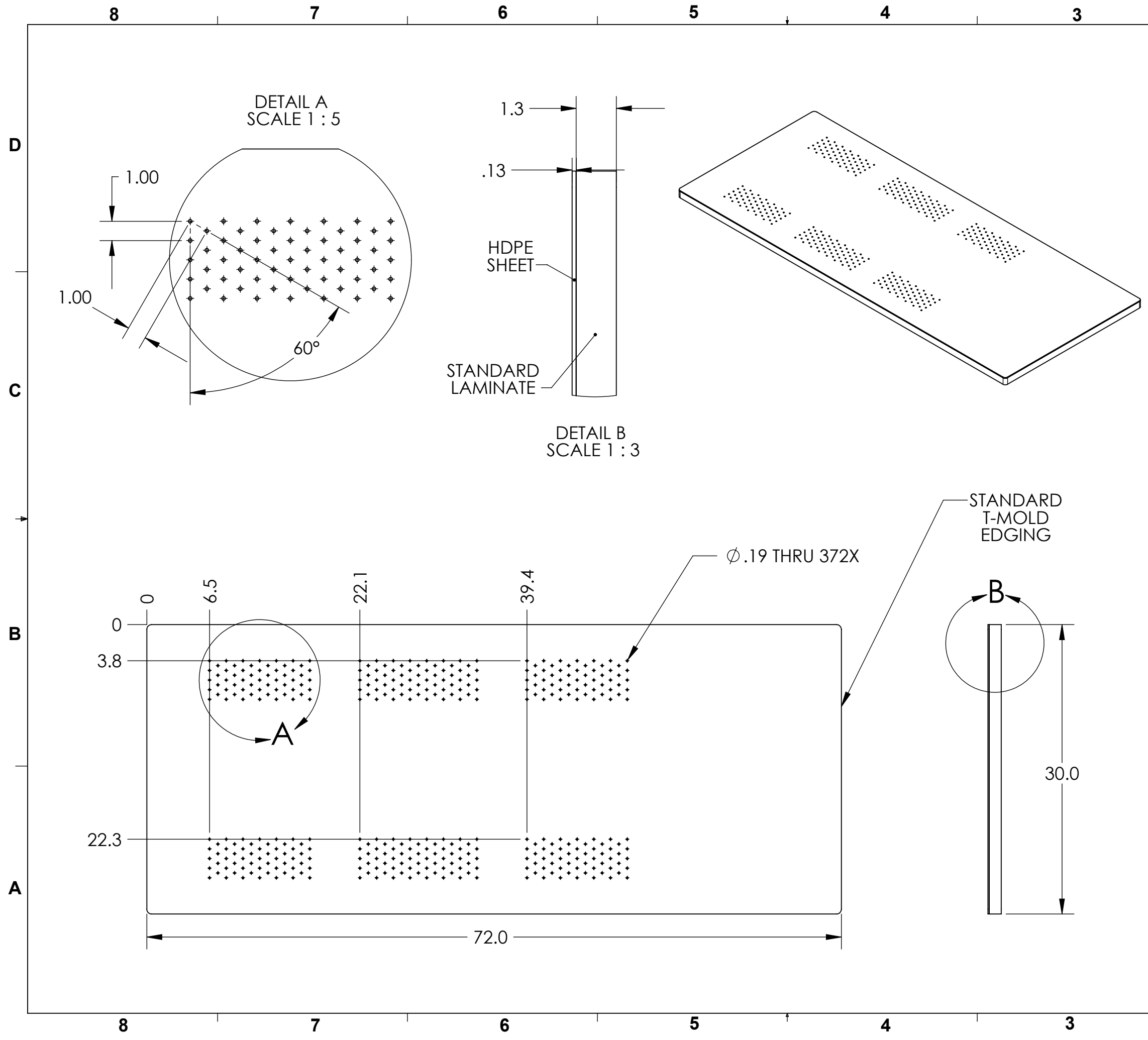
MATERIAL: HDPE + STANDARD LAMINATE, SMOKEY WHITE, BLACK T-MOLD EDGING

FINISH: N/A EST. WEIGHT (g):

THIRD ANGLE PROJECTION	DIMENSIONS ARE IN INCHES TOLERANCES: ANGULAR ±0.5° FRACTIONAL ±1 DECIMALS X ±0.3 X.XX ±0.10	SCALE 1:10	SHEET SIZE B
------------------------	--	---------------	-----------------

ITEM NAME: PLATE,MMB-DOWNDRAFT-TABLE,METRO-MFG

MAT'L NO.	ITEM NO.	REVISION	SHEET
	02-012038-00	01	1 OF 1



REV 01

02-012038-00